



# John Leader- (22 Assessors)

Leadership Style	Level	John Leader	Observed Values
Wisdom/ Visionary	7		
Mentor/ Partner	6	● ● ● ● ●	● ● ● ● ●
Integrator/ Inspirer	5	● ●	● ● ●
Facilitator/ Influencer	4	● ●	
Manager/ Organiser	3	●	○
Relationship Manager	2		●
Crisis Manager	1		
		IROS (P)=3-4-3-0   IROS (L)=0-0-0-0	IROS (P)=2-5-2-0   IROS (L)=1-0-0-0

## Matches 3

ambitious	3(I)	humour/ fun	12 5(I)
big picture view	6(O)	<b>building trust</b>	10 5(R)
<b>building trust</b>	5(R)	collaborative working	9 6(R)
business/ industry knowledge	4(I)	commitment	9 5(I)
<b>coaching/ mentoring</b>	6(R)	long hours (L)	9 3(I)
developing others	4(R)	<b>making a difference</b>	9 6(O)
<b>making a difference</b>	6(O)	<b>coaching/ mentoring</b>	8 6(R)
positive attitude	5(I)	compassion	7 7(R)
servant leader	6(R)	connecting with customers	7 6(O)
win-win partnerships	6(O)	supportive	7 2(R)

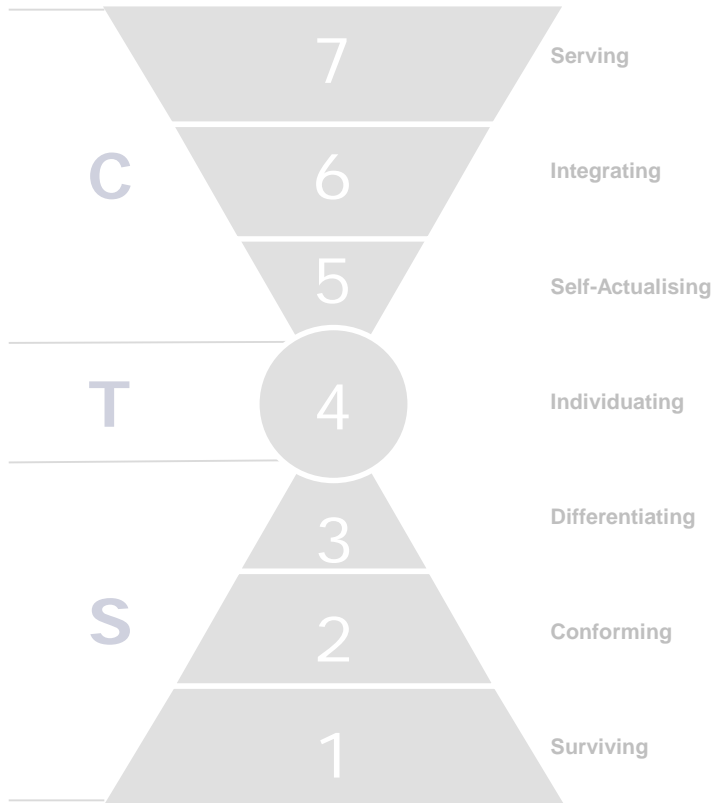
Orange=Values Match

P=Positive  
L=Potentially Limiting (white circle)

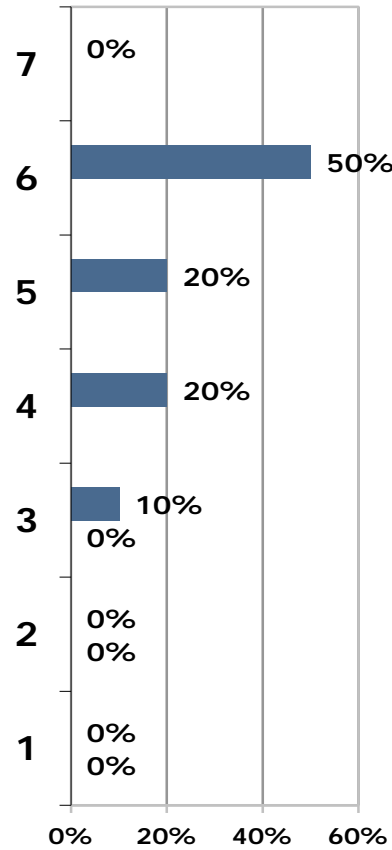
I=Individual  
R=Relationship  
O=Organisational  
S=Societal



# John Leader- (22 Assessors)

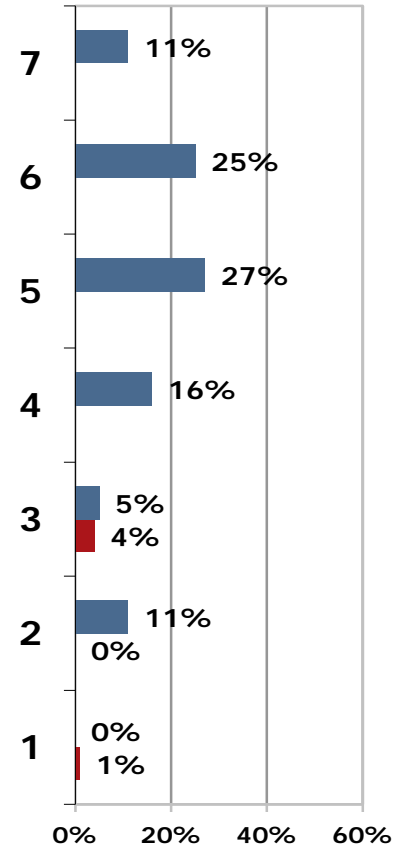


John Leader



CTS = 70-20-10  
Leadership Entropy = 0%

Observed Values



CTS = 63-16-21  
Leadership Entropy = 5%

C=Common Good  
T=Transformation  
S=Self-Interest

■ Positive Values  
■ Potentially Limiting Values