



Barrett Values Centre

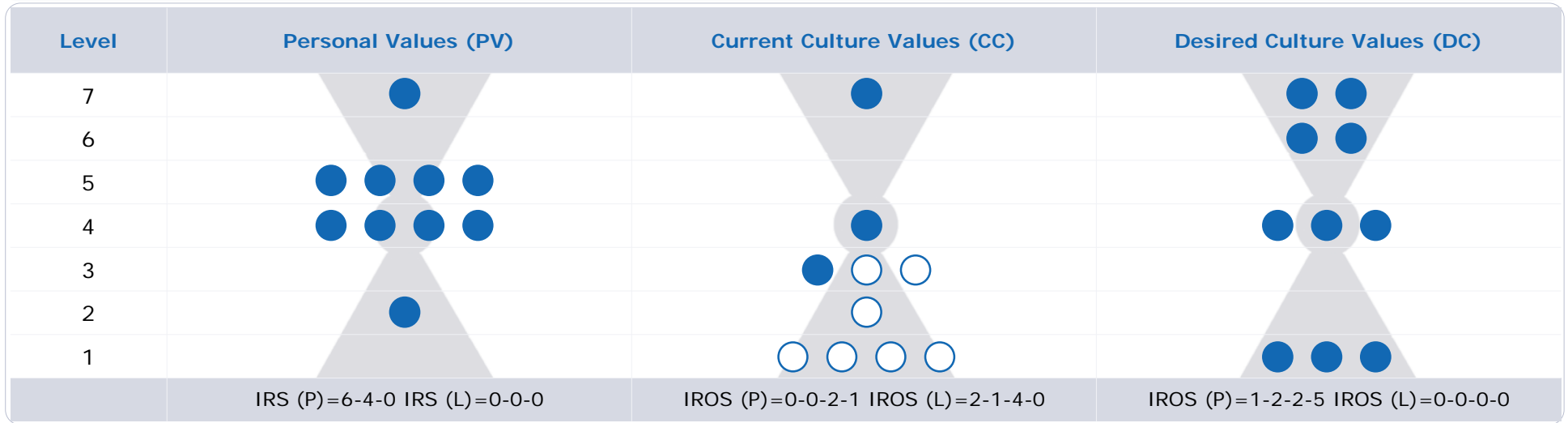
## National Assessment Example

Prepared by

Barrett Values Centre



# National Assessment Example (1001)



<b>Matches</b> <b>PV - CC 0</b> <b>CC - DC 0</b> <b>PV - DC 0</b> <b>new requests</b>  <b>Cultural Entropy:</b> <b>Current Culture</b> <b>47%</b>	humour/ fun	470	5(I)	unemployment (L)	599	1(O)	employment opportunities	612	1(O)
	family	422	2(R)	bureaucracy (L)	457	3(O)	financial stability	490	1(I)
	responsibility	383	4(I)	uncertainty about the future (L)	438	1(I)	concern for future generations	405	7(S)
	honesty	357	5(I)	freedom of speech	395	4(O)	effective healthcare	335	1(O)
	accountability	315	4(R)	wasted resources (L)	354	3(O)	nature conservancy	330	6(S)
	compassion	290	7(R)	materialistic (L)	338	1(I)	democratic process	277	4(R)
	positive attitude	284	5(I)	blame (L)	334	2(R)	environmental awareness	262	6(S)
	fairness	279	5(R)	peace	332	7(S)	long-term perspective	256	7(S)
	adaptability	257	4(I)	short-term focus (L)	319	1(O)	caring for the elderly	253	4(S)
	independence	228	4(I)	educational opportunities	279	3(O)	equality	239	4(R)

Black Underline = PV & CC  
 Orange = PV, CC & DC

Orange = CC & DC  
 Blue = PV & DC

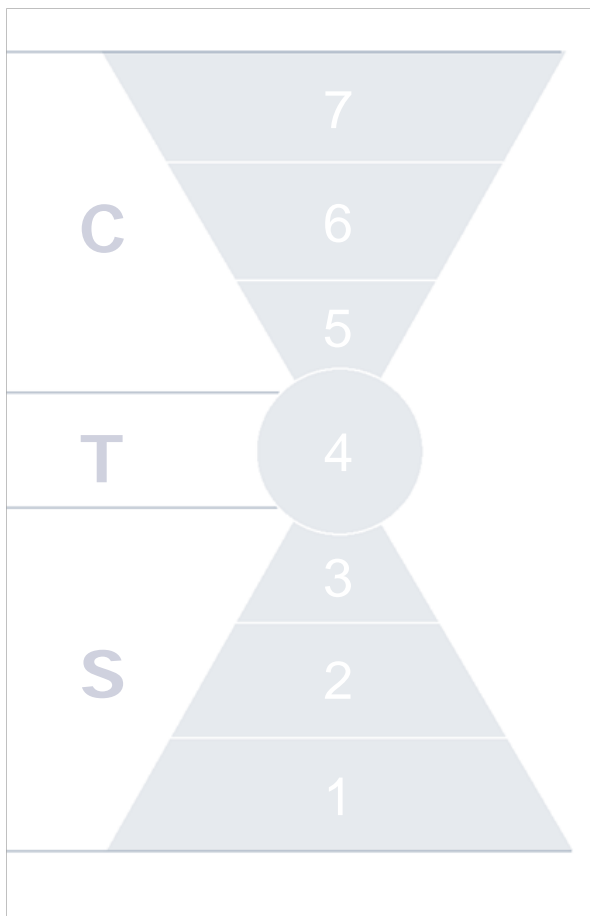
P = Positive  
 L = Potentially Limiting (white circle)

I = Individual  
 R = Relationship

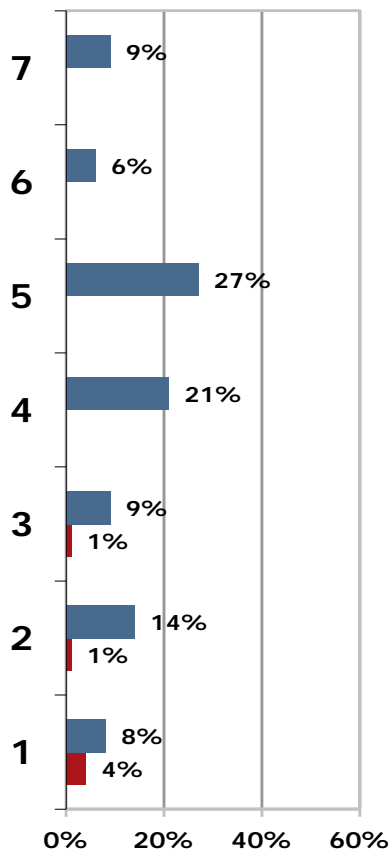
O = Organisational  
 S = Societal



# National Assessment Example (1001)



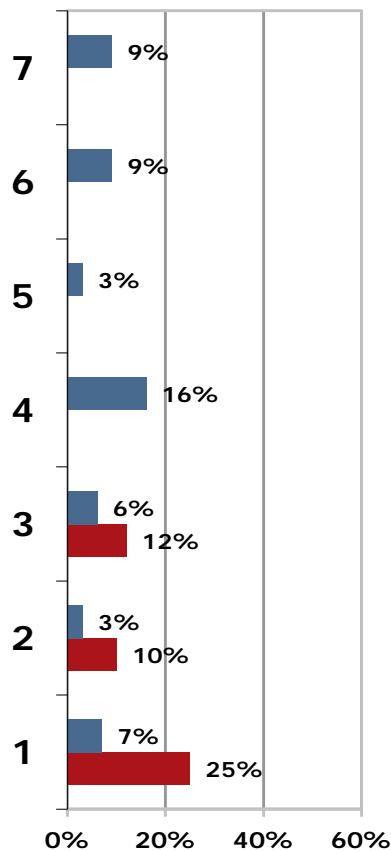
### Personal Values



CTS = 42-21-37

Cultural Entropy = 6%

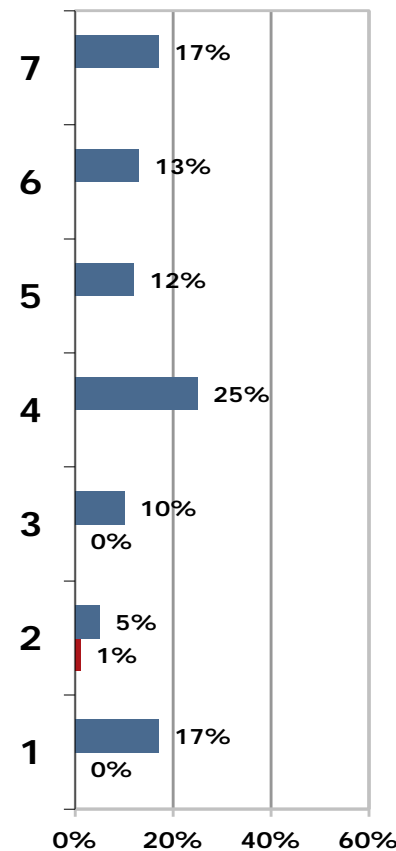
### Current Culture Values



CTS = 21-16-63

Cultural Entropy = 47%

### Desired Culture Values



CTS = 42-25-33

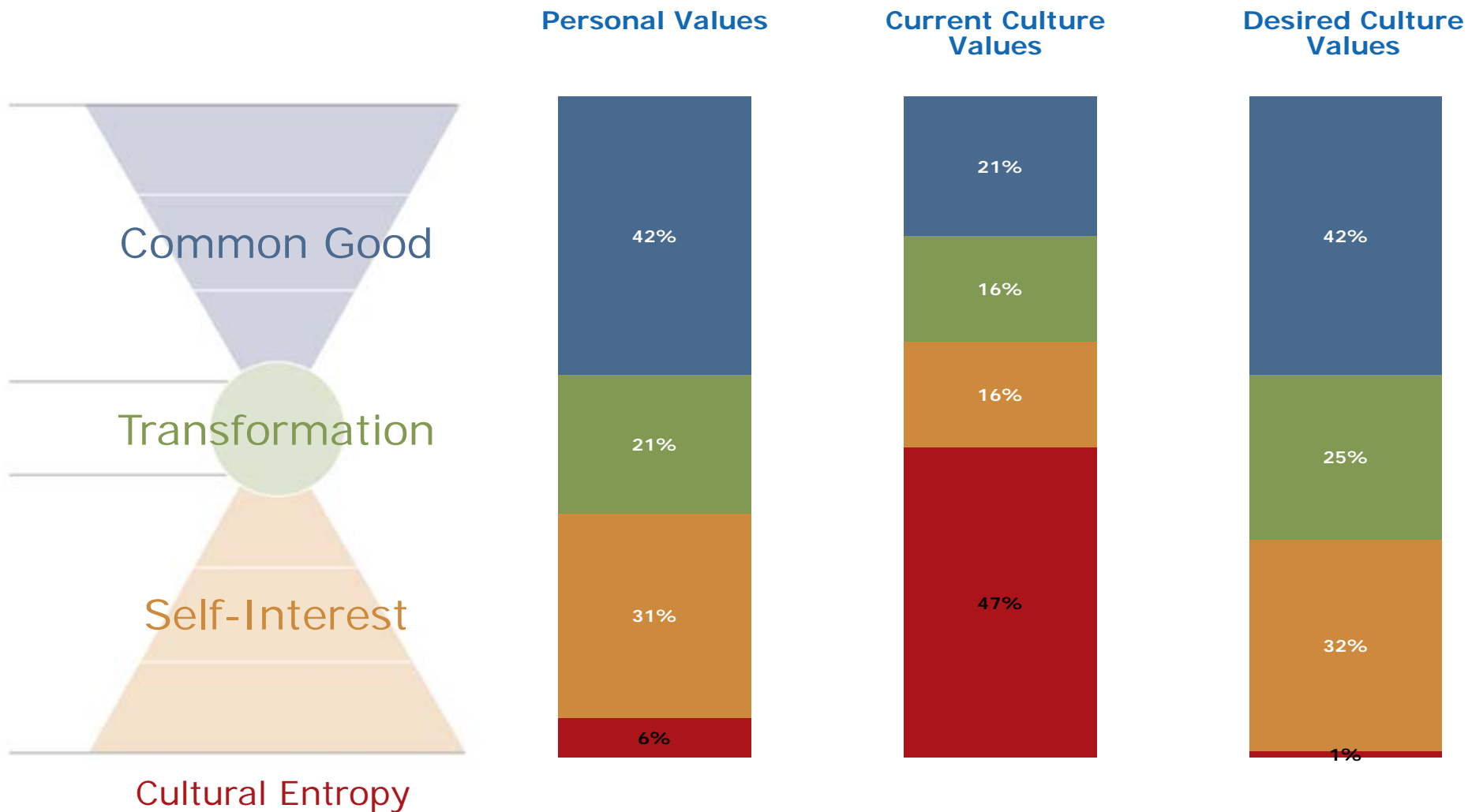
Cultural Entropy = 1%

C = Common Good  
 T = Transformation  
 S = Self-Interest

■ Positive Values  
 ■ Potentially Limiting Values



# National Assessment Example (1001)





# National Assessment Example (1001)

## Cultural Entropy Report

This table depicts the survey participants' total votes for Current Culture potentially limiting values by level. Potentially limiting values reflect the degree of disorder within a system and are found only at levels 1, 2 and 3. Please note that among the report diagrams slight variations in total Cultural Entropy percentages may occur as a result of rounding the level/category percentages to the nearest whole number.

Level	Potentially Limiting Values (Votes)	Cultural Entropy %
3	bureaucracy (457) wasted resources (354) centralised government (193) elitism (184) illiteracy (33) strict moral/ religious codes (11)	12% of total votes
2	blame (334) ethnic discrimination (167) gender discrimination (149) conflict/ aggression (135) hatred (126) tradition (119)	10% of total votes
1	unemployment (599) uncertainty about the future (438) materialistic (338) short-term focus (319) crime/ violence (277) poverty (173) environmental pollution (172) corruption (150) terrorism (30)	25% of total votes
Total	4758 out of 10010	47% of total votes



# National Assessment Example (1001)

## Values Jumps

A value jump occurs when there are more votes for a value in the Desired Culture than in the Current Culture. Listed below are the values with the largest increase in votes. The values in **bold** are represented in the Desired Culture.

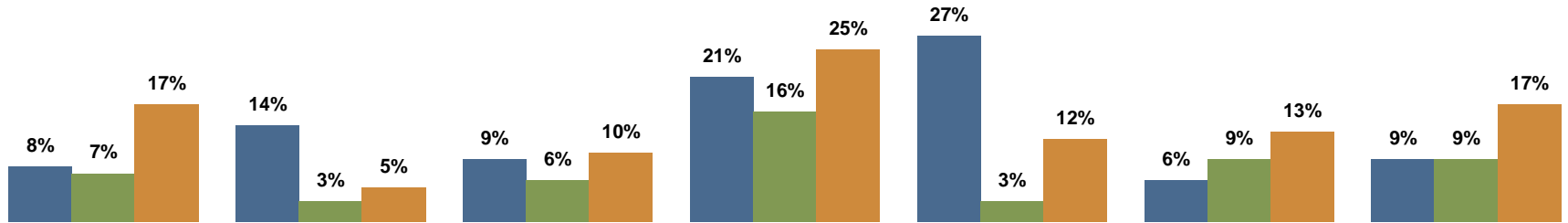
	Current Culture Votes	Desired Culture Votes	Jump
<b>employment opportunities</b>	<b>34</b>	<b>612</b>	<b>578</b>
<b>concern for future generations</b>	<b>52</b>	<b>405</b>	<b>353</b>
<b>financial stability</b>	<b>197</b>	<b>490</b>	<b>293</b>
<b>effective healthcare</b>	<b>97</b>	<b>335</b>	<b>238</b>
<b>long-term perspective</b>	<b>32</b>	<b>256</b>	<b>224</b>
<b>nature conservancy</b>	<b>118</b>	<b>330</b>	<b>212</b>
<b>caring for the elderly</b>	<b>42</b>	<b>253</b>	<b>211</b>
commitment	24	209	185
caring for the disadvantaged	39	195	156
social justice	24	169	145



# National Assessment Example (1001)

## Positive Values Distribution

This diagram shows the percentage of positive values by level. The table indicates the top Desired Culture values and Values Jumps, at the levels where more focus is requested.



	Level 1	Level 2	Level 3	Level 4	Level 5	Level 6	Level 7
<b>Desired Culture Values</b>	employment opportunities financial stability effective healthcare			democratic process caring for the elderly equality		nature conservancy environmental awareness	concern for future generations long-term perspective
<b>Values Jumps</b>				caring for the disadvantaged social justice	commitment		

Personal Values ■

Current Culture Values ■

Desired Culture Values ■