



Barrett Values Centre

Small School Example- Teacher

Prepared by

Barrett Values Centre

June 6, 2016



Small School Example- Teacher (13)

Personal & Current Culture Alignment

Values Matches: 2

- 3 or more. People are able to bring themselves to work.
- 1-2. People are somewhat able to bring themselves to work.
- 0. People are not able to bring themselves to work. Look to blue values in Desired Culture for guidance, if any.

Current & Desired Culture Alignment

Values Matches: 6

- 6 or more. Excellent, strong, healthy culture.
- 4-5, good. Group is on the right track.
- 2-3, fair. Group is somewhat on the right track. More work needs to be done.
- 0-1, poor. Group is unhappy or frustrated, wants to see changes or take a new direction.

Potentially Limiting Values: 0

- 0. This group does not operate from the basis of fear.
- 1-2. May be some element of fear behind how decisions are made or how people are managed.
- 3+. Fear is a factor in how this group operates or is managed.

Cultural Entropy: 2%

- 0-10%. Healthy functioning.
- 11%-20%. Some problems requiring careful monitoring.
- 21%-30%. Significant problems requiring immediate attention.
- 31%-40%. Serious situation requiring immediate leadership intervention and changes.
- 41%+. Critical situation requiring leadership changes to avoid organisational failure.

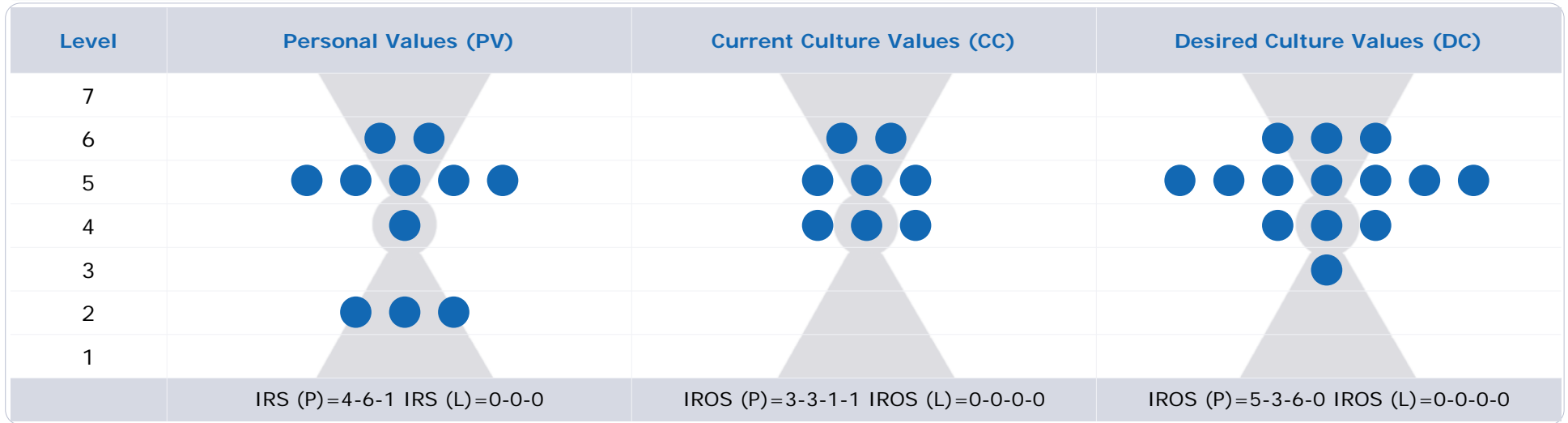
NEW VALUES TO FOCUS ON

Any values shown in blue are values that are important to the individuals who work for the group and are requested in the Desired Culture but are not showing in the top values of the Current Culture. How can you support your staff to bring these values and strengths to work so that they and the group would derive further benefit from them?

Any Desired Culture values shown in black are entirely new requests. They do not show in the Personal or Current Culture. To what extent are these values positive new requests, or maybe a reaction to something that is not happening or is unhealthy in the Current Culture? What themes do you notice with these new values? Open a dialogue with these people to gain a deeper understanding.



Small School Example- Teacher (13)



Matches	caring	10 2(R)	<i>creativity</i>	8 5(I)	<i>passion for learning</i>	9 4(I)
	family	9 2(R)	<i>coaching/ mentoring</i>	7 6(R)	<i>continuous improvement</i>	7 4(O)
PV - CC 2	humour/ fun	9 5(I)	<u>making a difference</u>	7 6(S)	humour/ fun	7 5(O)
CC - DC 6	<i>commitment</i>	7 5(I)	<i>teamwork</i>	7 4(R)	cooperation	6 5(R)
PV - DC 2 new requests	enthusiasm	7 5(I)	<i>commitment</i>	6 5(I)	positive attitude	6 5(I)
	<u>making a difference</u>	7 6(S)	<i>continuous improvement</i>	6 4(O)	<i>teamwork</i>	6 4(R)
Cultural Entropy: Current Culture 2%	continuous learning	5 4(I)	<i>passion for learning</i>	6 4(I)	<i>creativity</i>	5 5(I)
	cooperation	5 5(R)	sense of community	5 5(R)	shared values	5 5(O)
	empathy	5 6(R)			<i>coaching/ mentoring</i>	4 6(R)
	fairness	5 5(R)			<i>commitment</i>	4 5(I)
	friendship	5 2(R)			efficiency	4 3(O)
					shared vision	4 5(O)
					student centred	4 6(O)
					well-being (physical/ emotional/ mental/ spiritual)	4 6(I)

Black Underline = PV & CC
 Orange = PV, CC & DC

Orange = CC & DC
 Blue = PV & DC

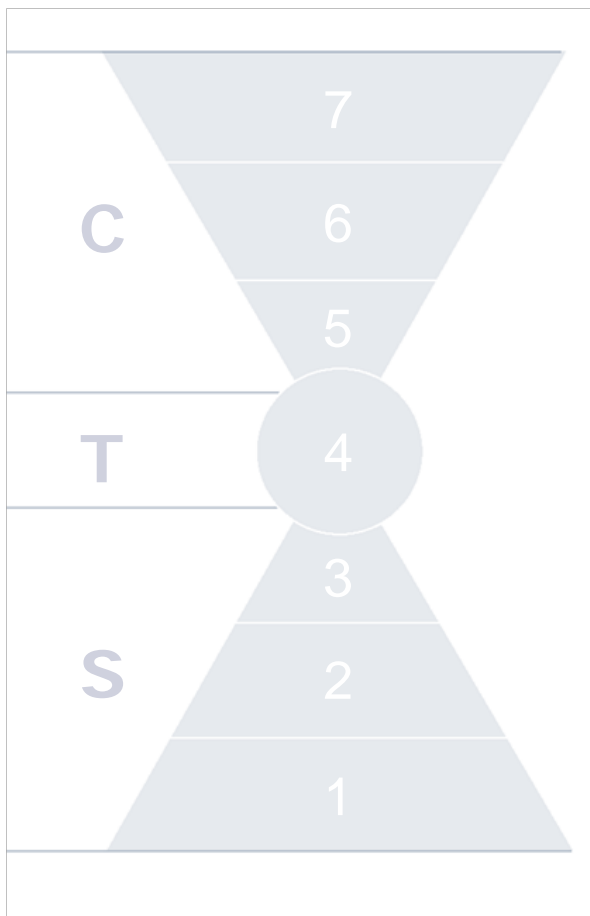
P = Positive
 L = Potentially Limiting (white circle)

I = Individual
 R = Relationship

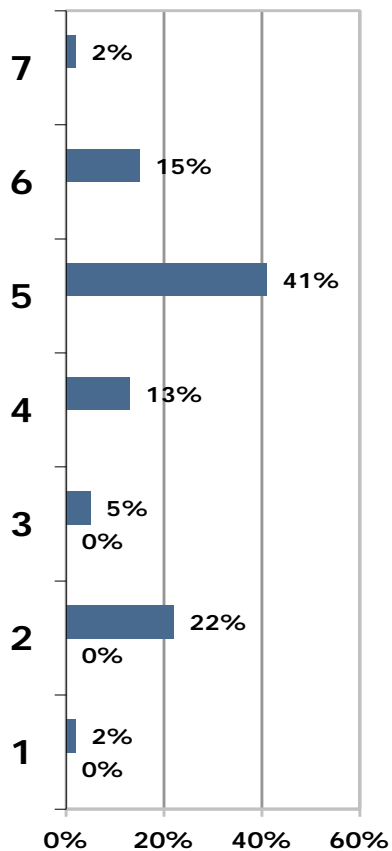
O = Organisational
 S = Societal



Small School Example- Teacher (13)

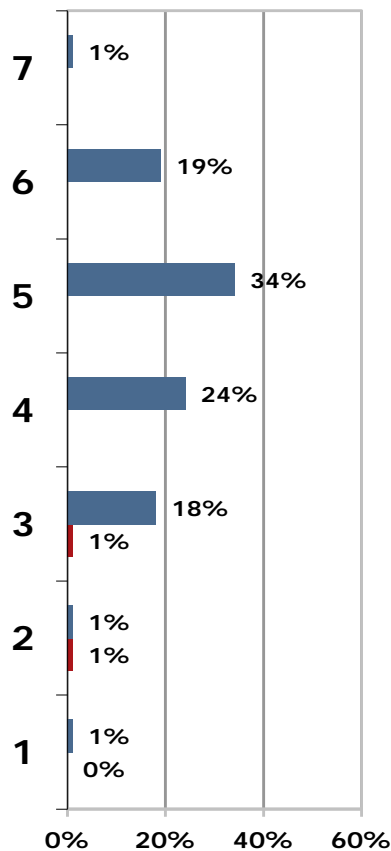


Personal Values



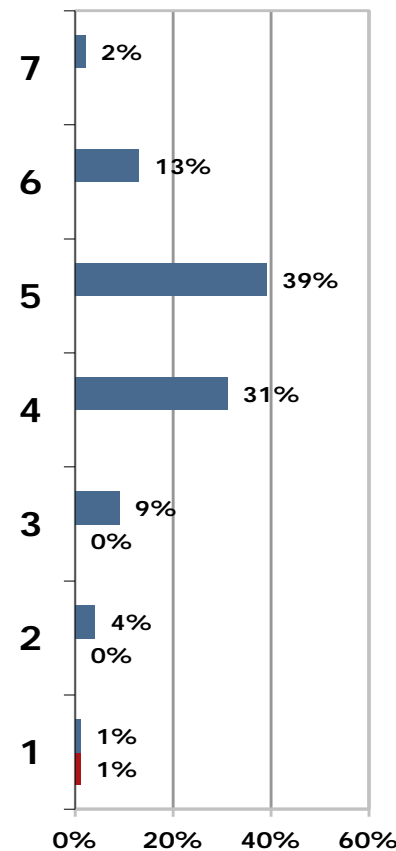
CTS = 58-13-29
Cultural Entropy = 0%

Current Culture Values



CTS = 54-24-22
Cultural Entropy = 2%

Desired Culture Values



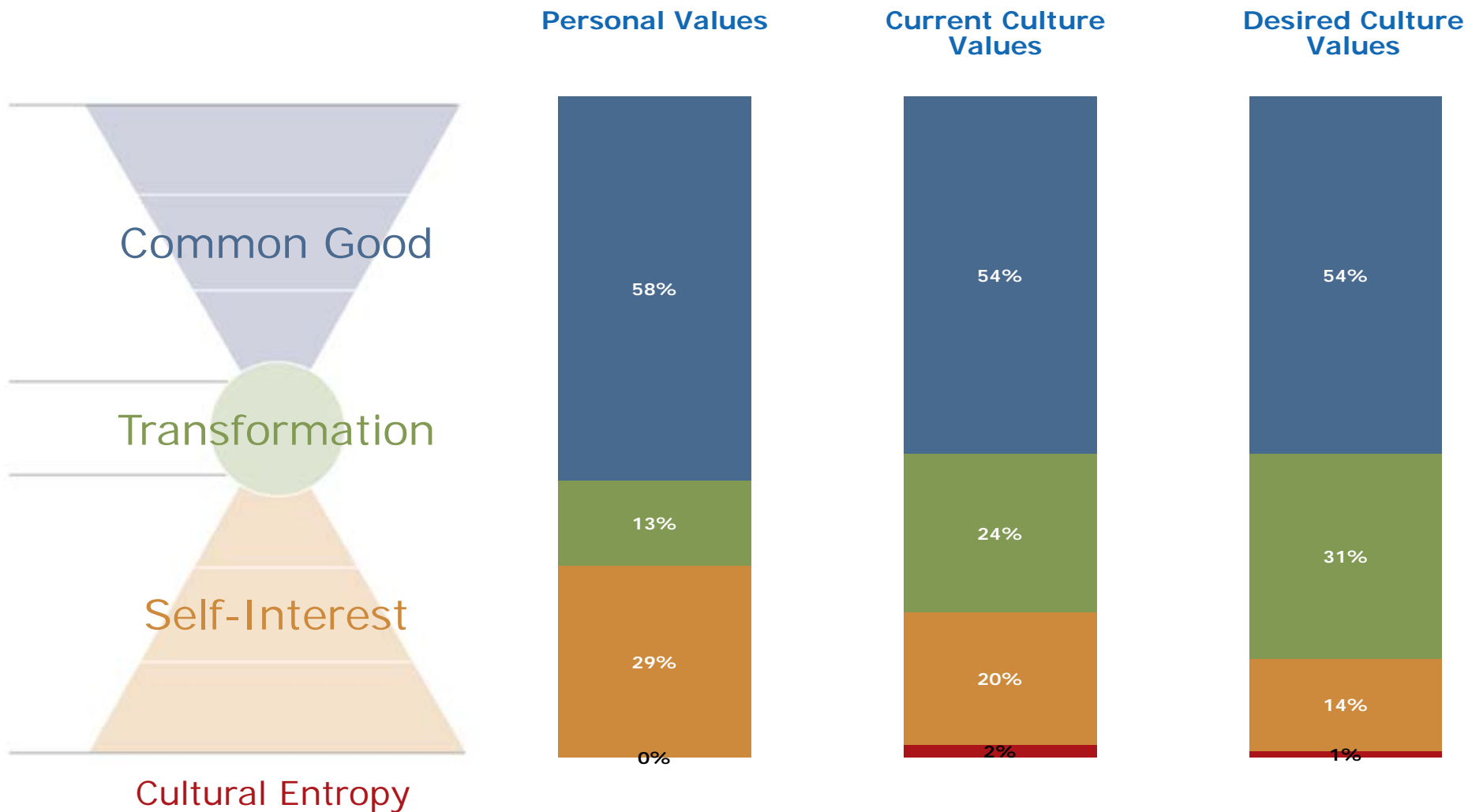
CTS = 54-31-15
Cultural Entropy = 1%

C = Common Good
 T = Transformation
 S = Self-Interest

■ Positive Values
 ■ Potentially Limiting Values



Small School Example- Teacher (13)





Small School Example- Teacher (13)

Cultural Entropy Report

This table depicts the survey participants' total votes for Current Culture potentially limiting values by level. Potentially limiting values reflect the degree of disorder within a system and are found only at levels 1, 2 and 3. Please note that among the report diagrams slight variations in total Cultural Entropy percentages may occur as a result of rounding the level/category percentages to the nearest whole number.

Level	Potentially Limiting Values (Votes)	Cultural Entropy %
3	bureaucracy (1)	1% of total votes
2	parent interference (1)	1% of total votes
1		0% of total votes
Total	2 out of 130	2% of total votes



Small School Example- Teacher (13)

Values Jumps

A value jump occurs when there are more votes for a value in the Desired Culture than in the Current Culture. Listed below are the values with the largest increase in votes. The values in bold are represented in the Desired Culture.

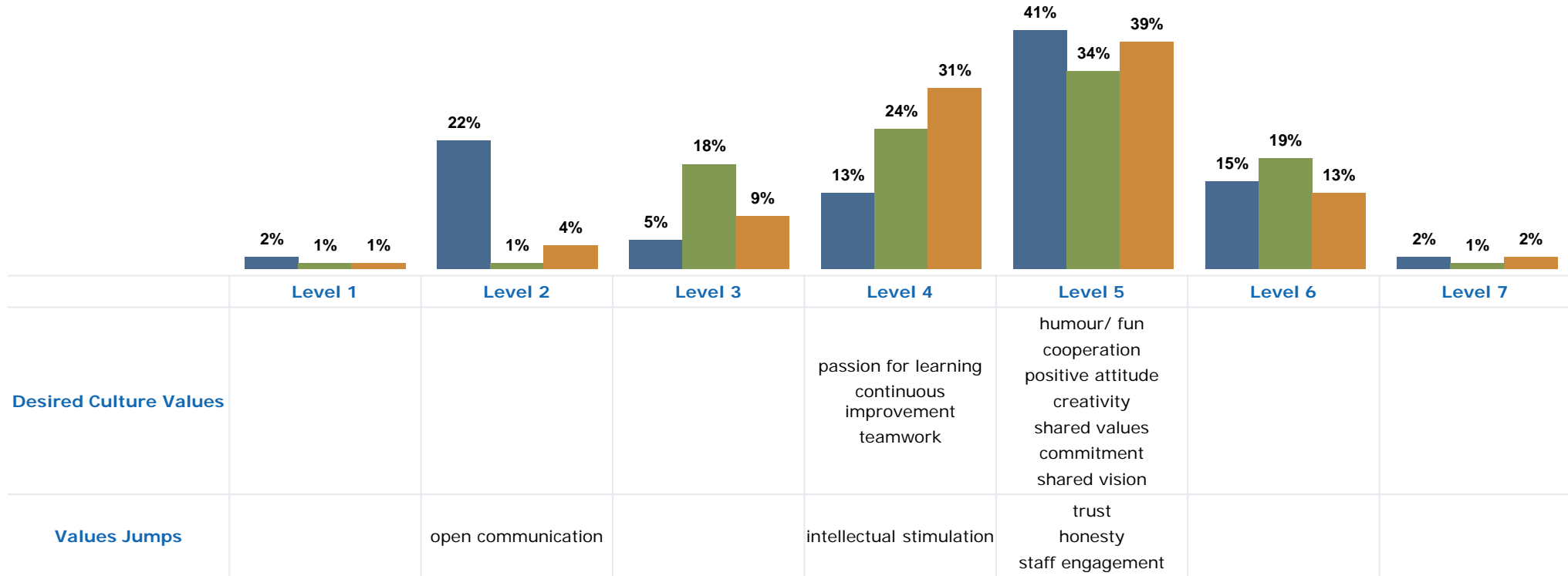
	Current Culture Votes	Desired Culture Votes	Jump
passion for learning	6	9	3
humour/ fun	4	7	3
efficiency	1	4	3
open communication	0	3	3
trust	0	3	3
cooperation	4	6	2
positive attitude	4	6	2
shared vision	2	4	2
honesty	1	3	2
intellectual stimulation	1	3	2
staff engagement	1	3	2



Small School Example- Teacher (13)

Positive Values Distribution

This diagram shows the percentage of positive values by level. The table indicates the top Desired Culture values and Values Jumps, at the levels where more focus is requested.



Personal Values ■

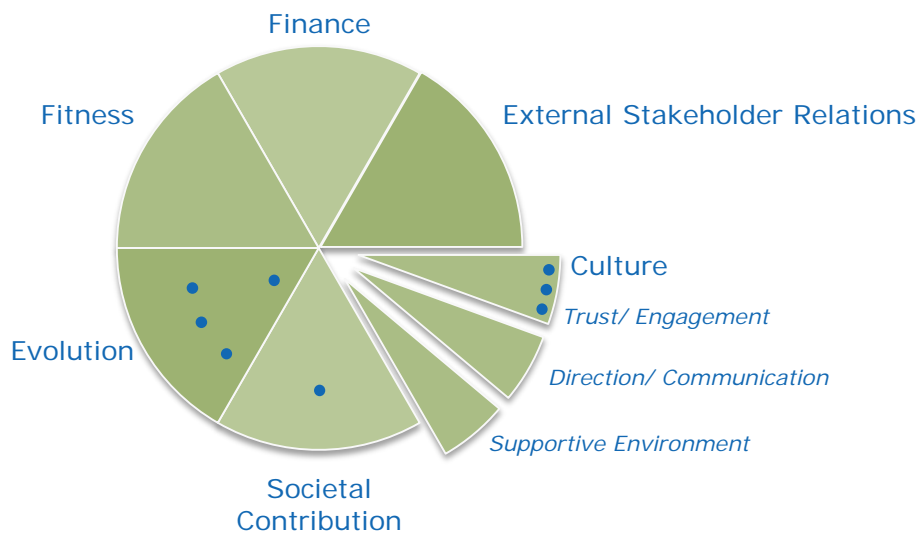
Current Culture Values ■

Desired Culture Values ■

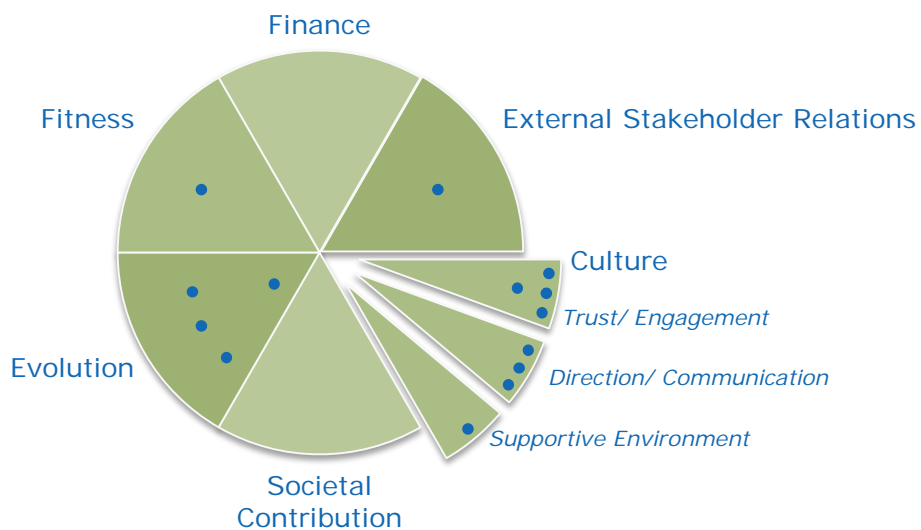


Small School Example- Teacher (13)

Current Culture Values



Desired Culture Values



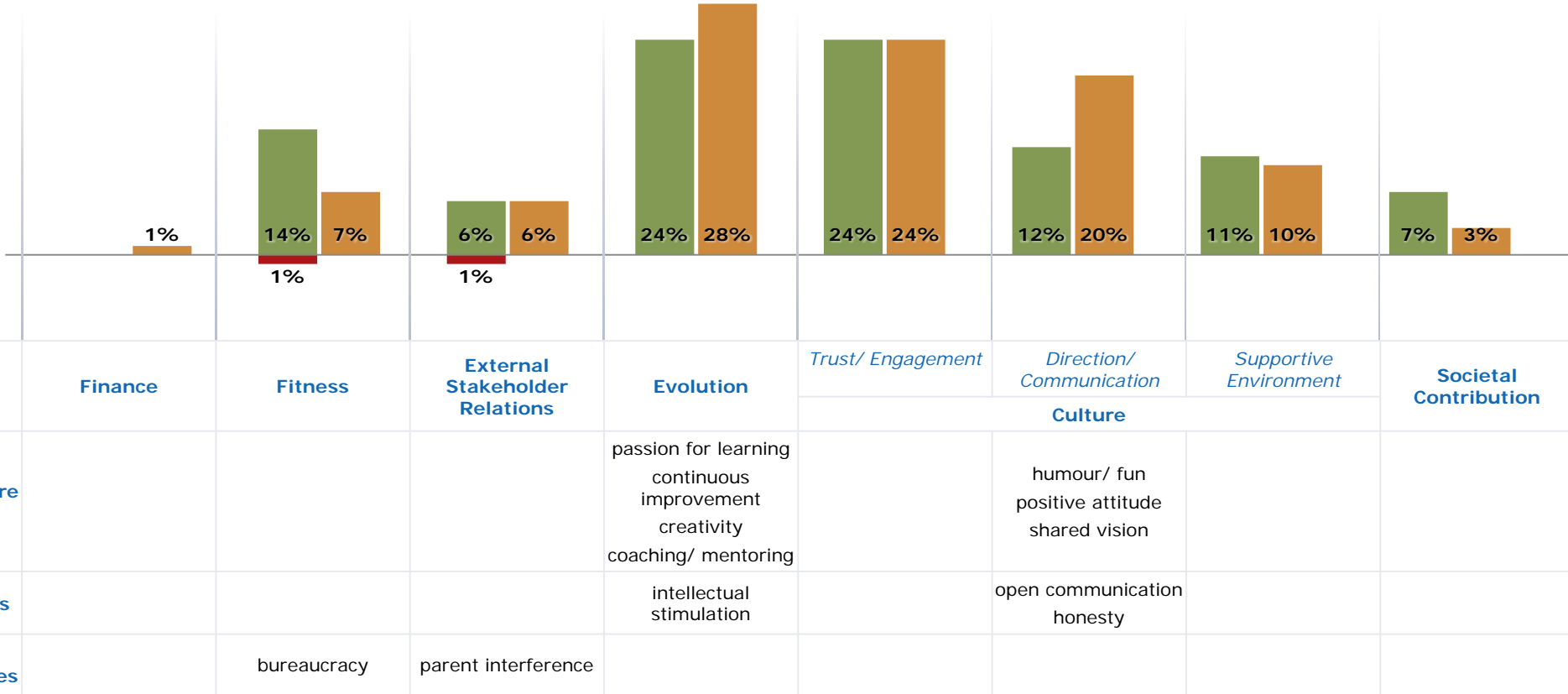
		Current Culture	Desired Culture
Finance			
Fitness			efficiency
External Stakeholder Relations			student centred
Evolution		creativity coaching/ mentoring continuous improvement passion for learning	passion for learning continuous improvement creativity coaching/ mentoring
Culture	Trust/ Engagement	teamwork commitment sense of community	cooperation teamwork shared values commitment
	Direction/ Communication		humour/ fun positive attitude shared vision
	Supportive Environment		well-being (physical/ emotional/ mental/ spiritual)
Societal Contribution		making a difference	



Small School Example- Teacher (13)

BNS- Values Distribution

This diagram shows the percentage of all values across the BNS areas. The table indicates the top Desired Culture values and Values Jumps in the areas where more focus is requested, and all the potentially limiting values.



Positive Values - Current Culture ■

Cultural Entropy: Current Culture ■

Positive Values - Desired Culture ■